



BBTLine's 8-Way Version 2 Surface Mount RF Combiner - Measurement

Ten [8-Way Version 2 Combiners](#) Have Been Measured

Measurement S-Parameters Results Are Below.

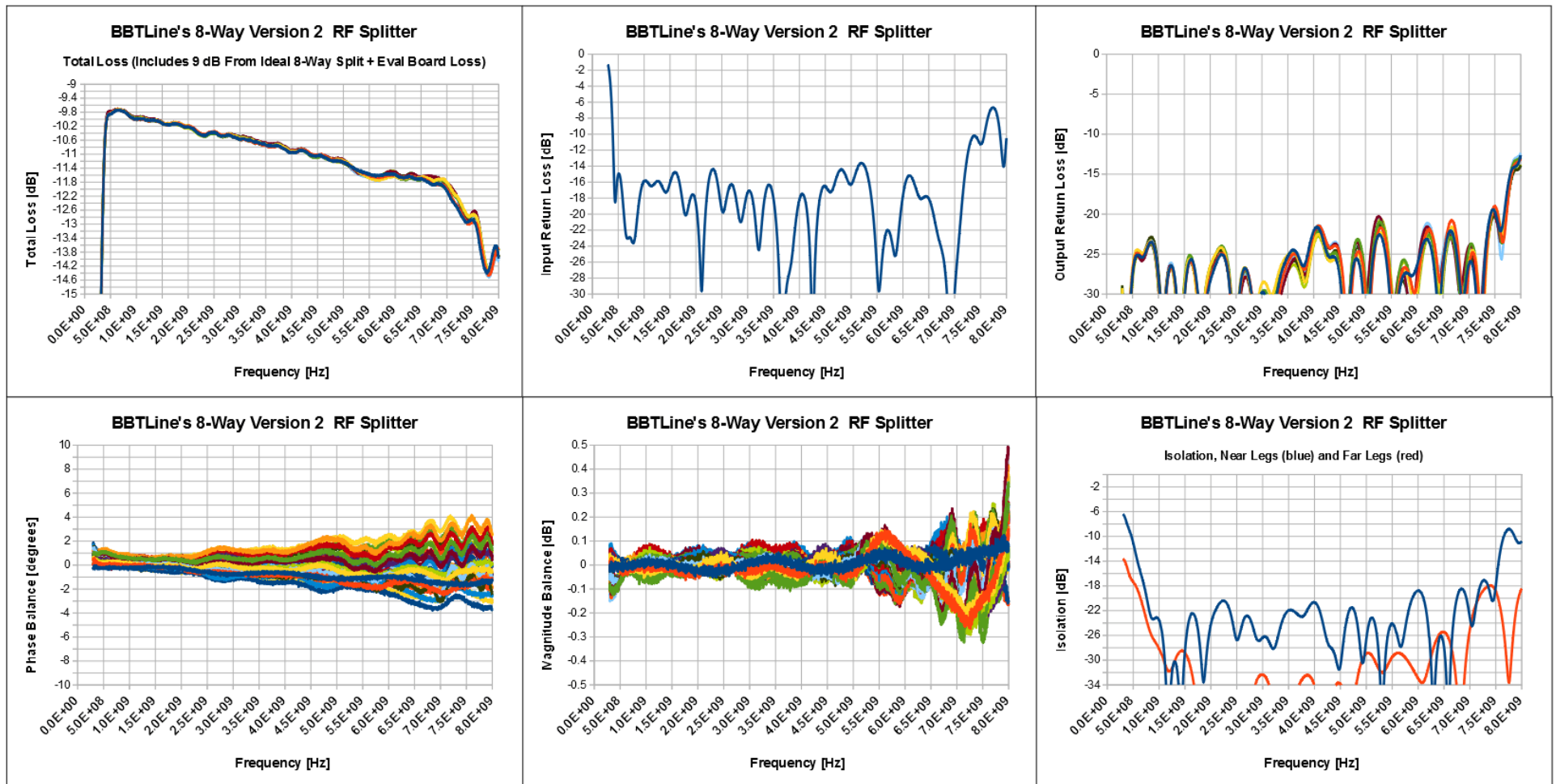
The 8-Way Version 2 Power Divider Is A BroadBand Splitter With Excellent Characteristics: 1) Greater Than 20 Watt Power Rating As A Splitter, 2) Low Insertion Loss, 3) Good Return Loss And Isolation, 4) 500 MHz To 7 GHz Bandwidth, 5) Surface Mount

An [Evaluation Board With Male Smooth Bore SMP Connectors](#) Is Available.

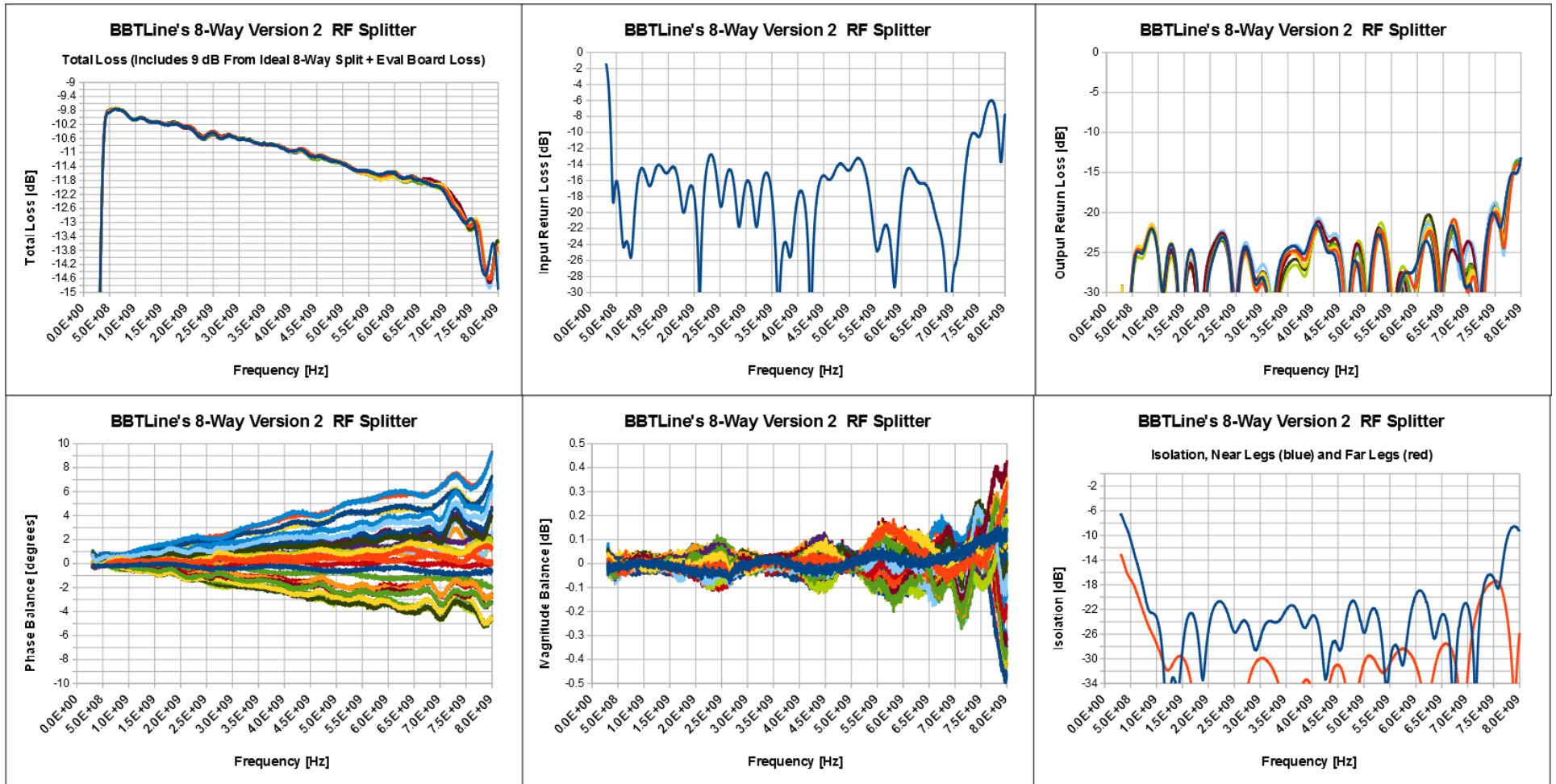
Version 2 Has The Common Port Opposite The Other 8 Ports. The [Version 1 8-Way Power Divider](#) Has All 9 Ports On One Side.



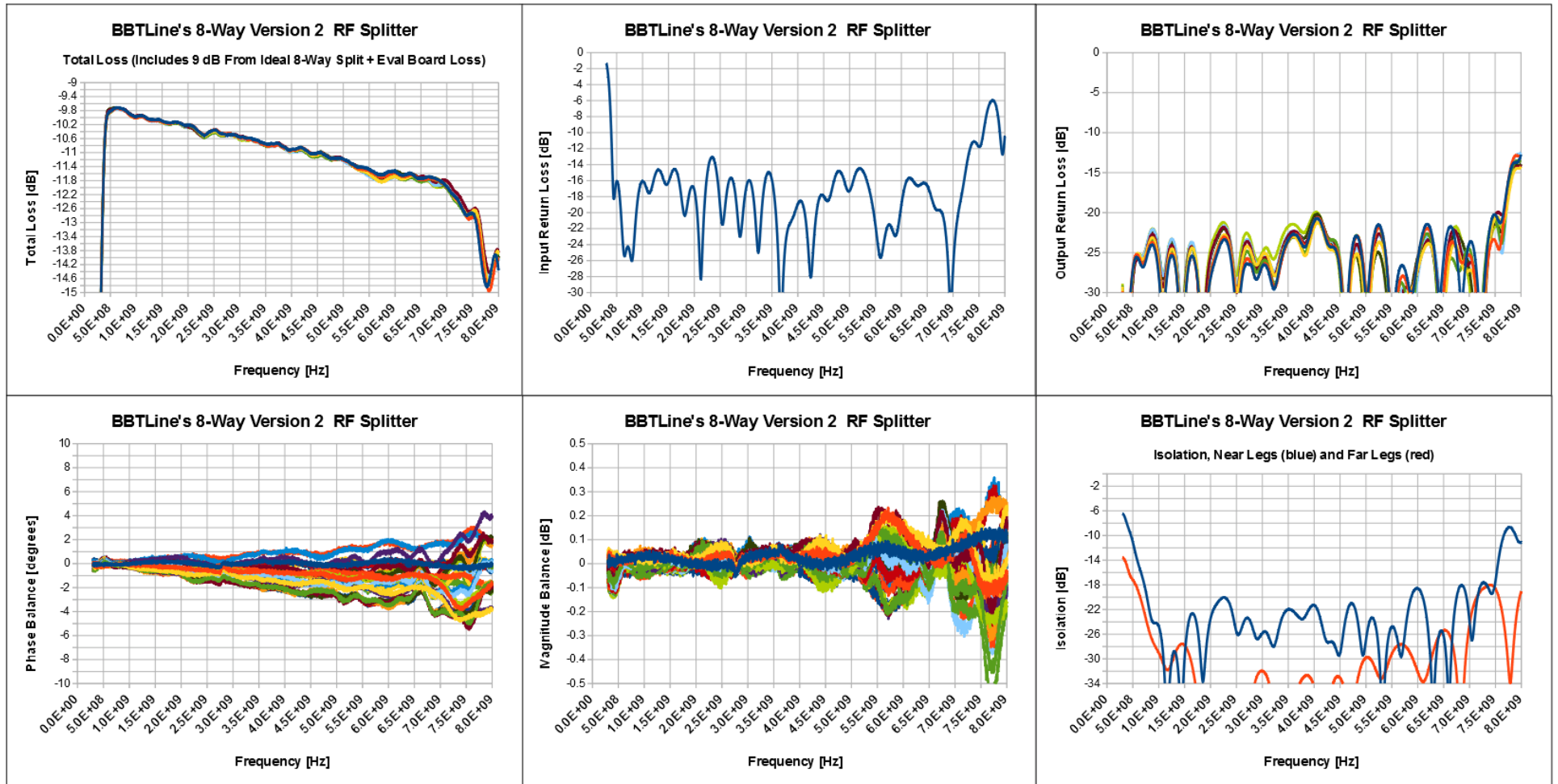
Total Loss Plot includes 9 dB from Ideal 8-Way Split plus Evaluation Board Loss (0.2 dB at 6 GHz). To derive **Insertion Loss** (at 6 GHz) from **Total Loss**, Add 9.2 dB. For example, if **Total Loss** reads -11.8 dB at 6 GHz, then **Insertion Loss** is 2.6 dB.



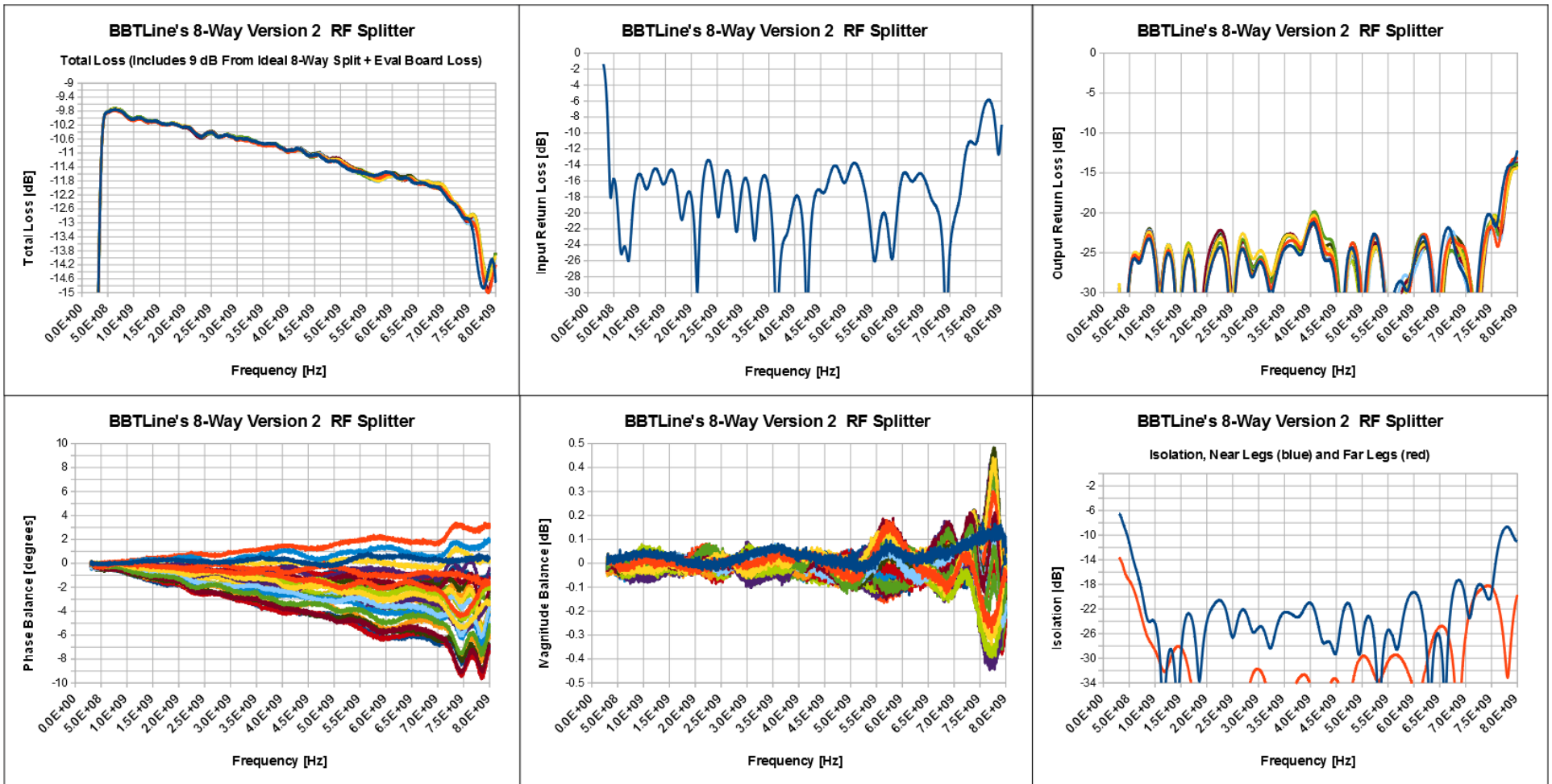
Total Loss Plot includes 9 dB from Ideal 8-Way Split plus Evaluation Board Loss (0.2 dB at 6 GHz). To derive **Insertion Loss** (at 6 GHz) from **Total Loss**, Add 9.2 dB. For example, if **Total Loss** reads -11.8 dB at 6 GHz, then **Insertion Loss** is 2.6 dB.



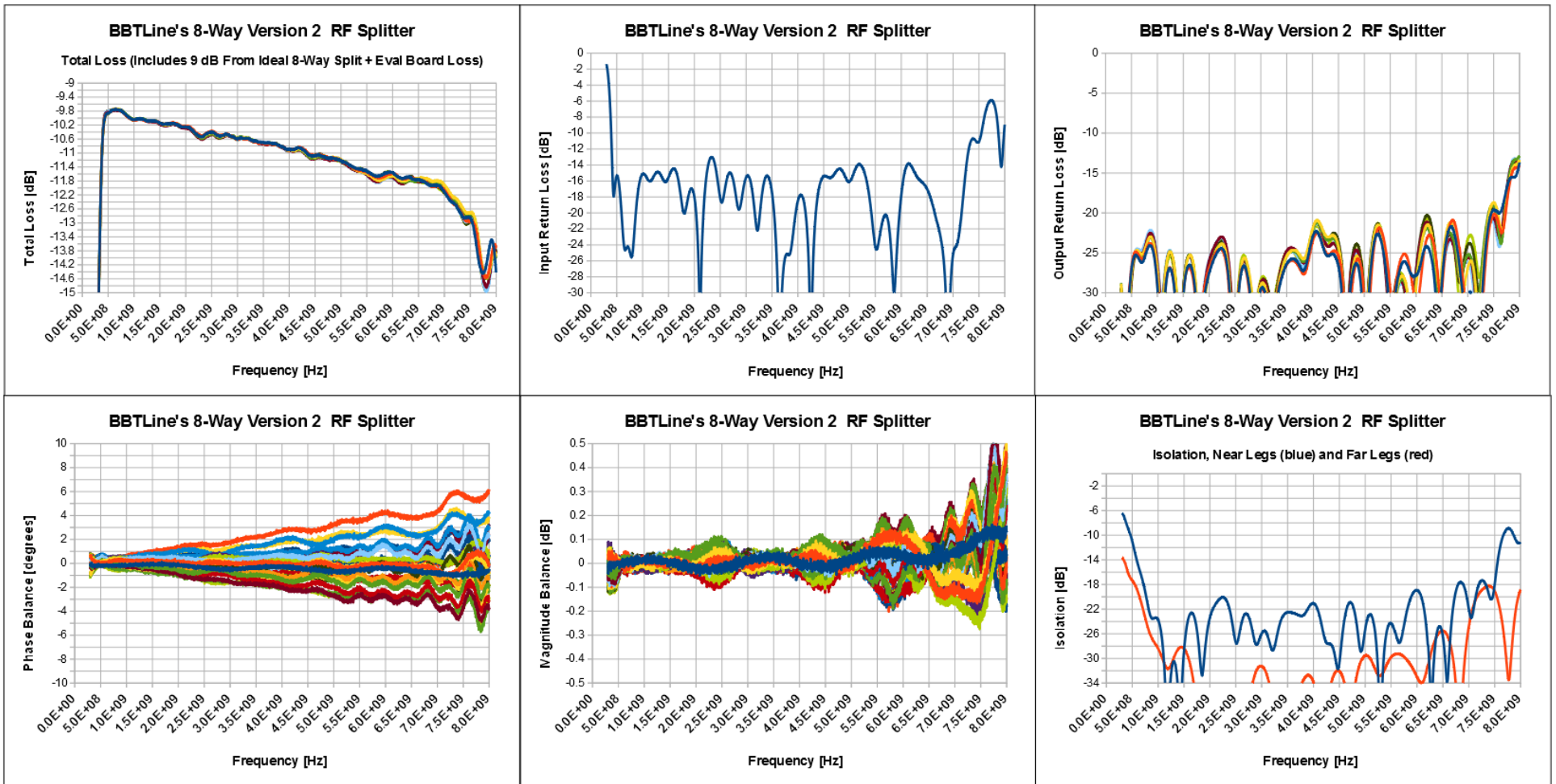
Total Loss Plot includes 9 dB from Ideal 8-Way Split plus Evaluation Board Loss (0.2 dB at 6 GHz). To derive **Insertion Loss** (at 6 GHz) from **Total Loss**, Add 9.2 dB. For example, if **Total Loss** reads -11.8 dB at 6 GHz, then **Insertion Loss** is 2.6 dB.



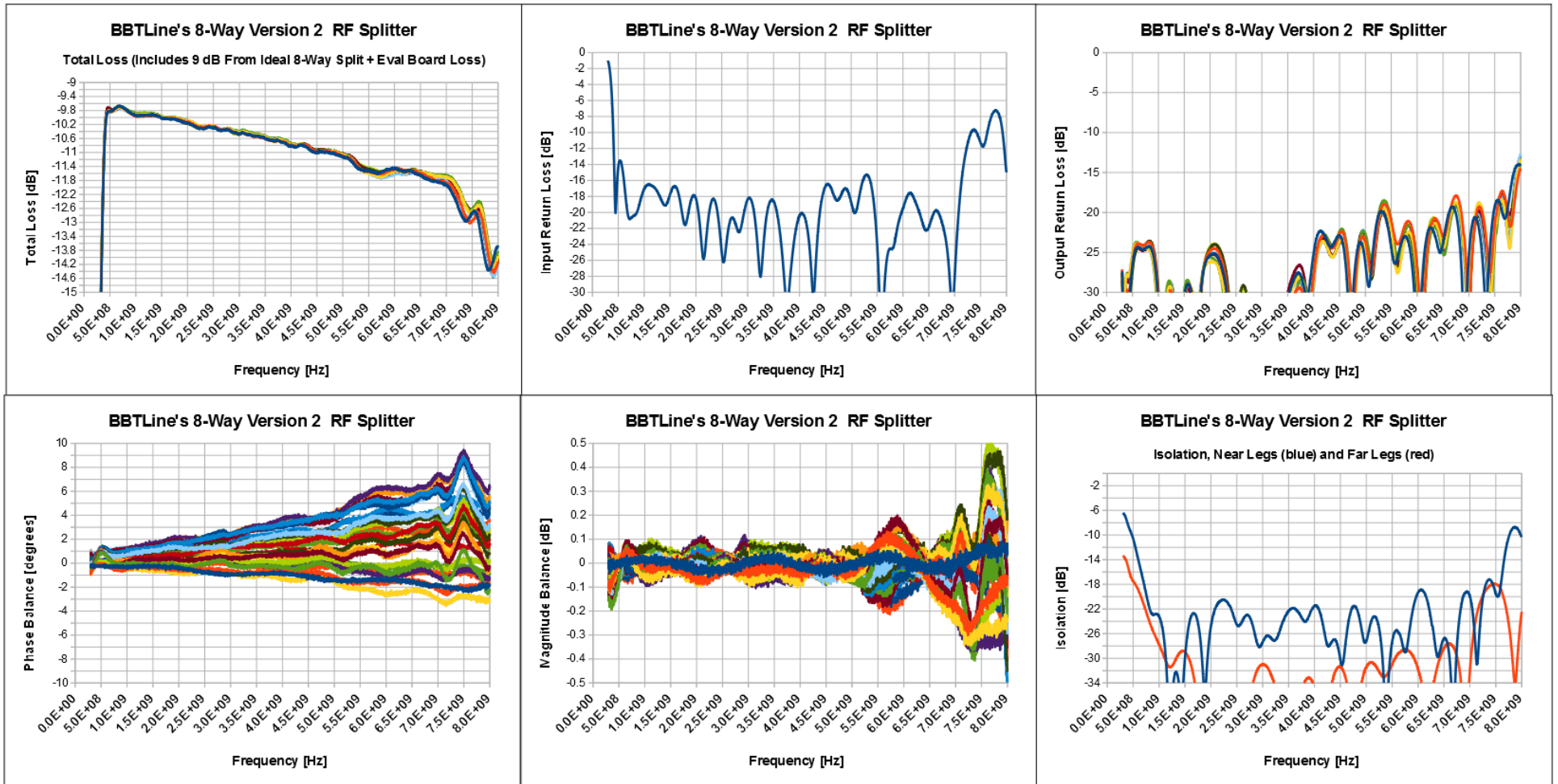
Total Loss Plot includes 9 dB from Ideal 8-Way Split plus Evaluation Board Loss (0.2 dB at 6 GHz). To derive **Insertion Loss** (at 6 GHz) from **Total Loss**, Add 9.2 dB. For example, if **Total Loss** reads -11.8 dB at 6 GHz, then **Insertion Loss** is 2.6 dB.



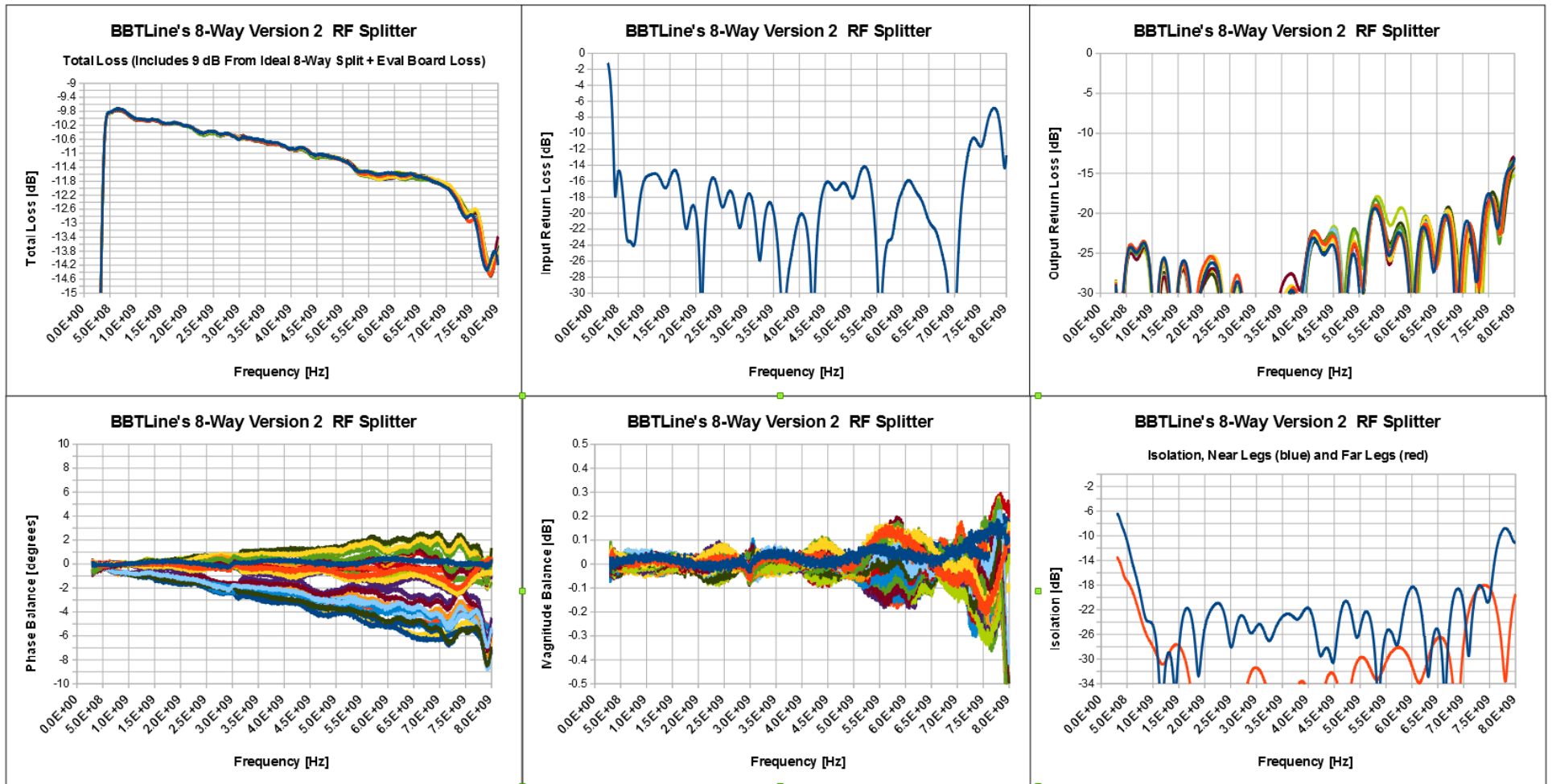
Total Loss Plot includes 9 dB from Ideal 8-Way Split plus Evaluation Board Loss (0.2 dB at 6 GHz). To derive **Insertion Loss** (at 6 GHz) from **Total Loss**, Add 9.2 dB. For example, if **Total Loss** reads -11.8 dB at 6 GHz, then **Insertion Loss** is 2.6 dB.



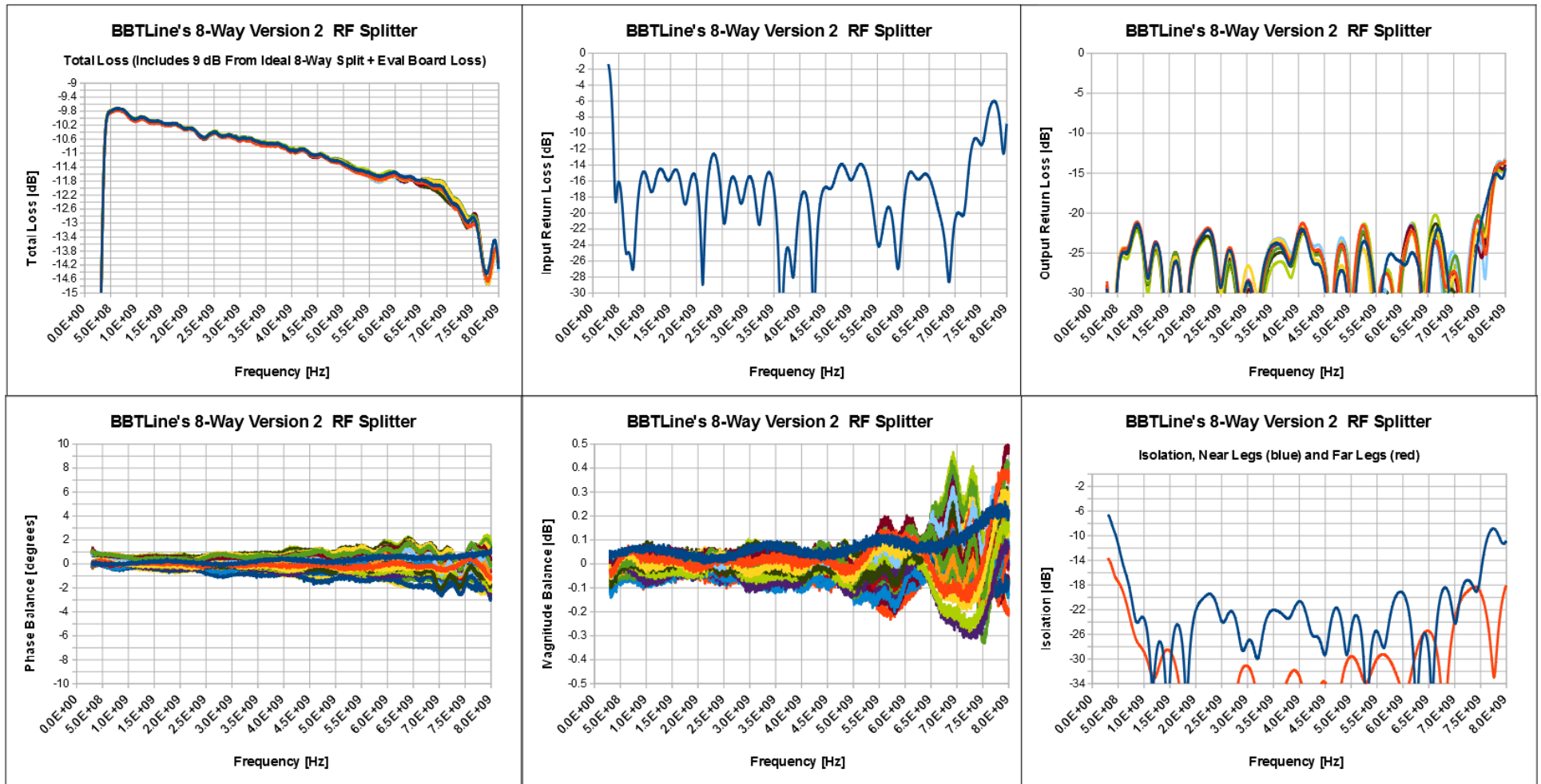
Total Loss Plot includes 9 dB from Ideal 8-Way Split plus Evaluation Board Loss (0.2 dB at 6 GHz). To derive **Insertion Loss** (at 6 GHz) from **Total Loss**, Add 9.2 dB. For example, if **Total Loss** reads -11.8 dB at 6 GHz, then **Insertion Loss** is 2.6 dB.



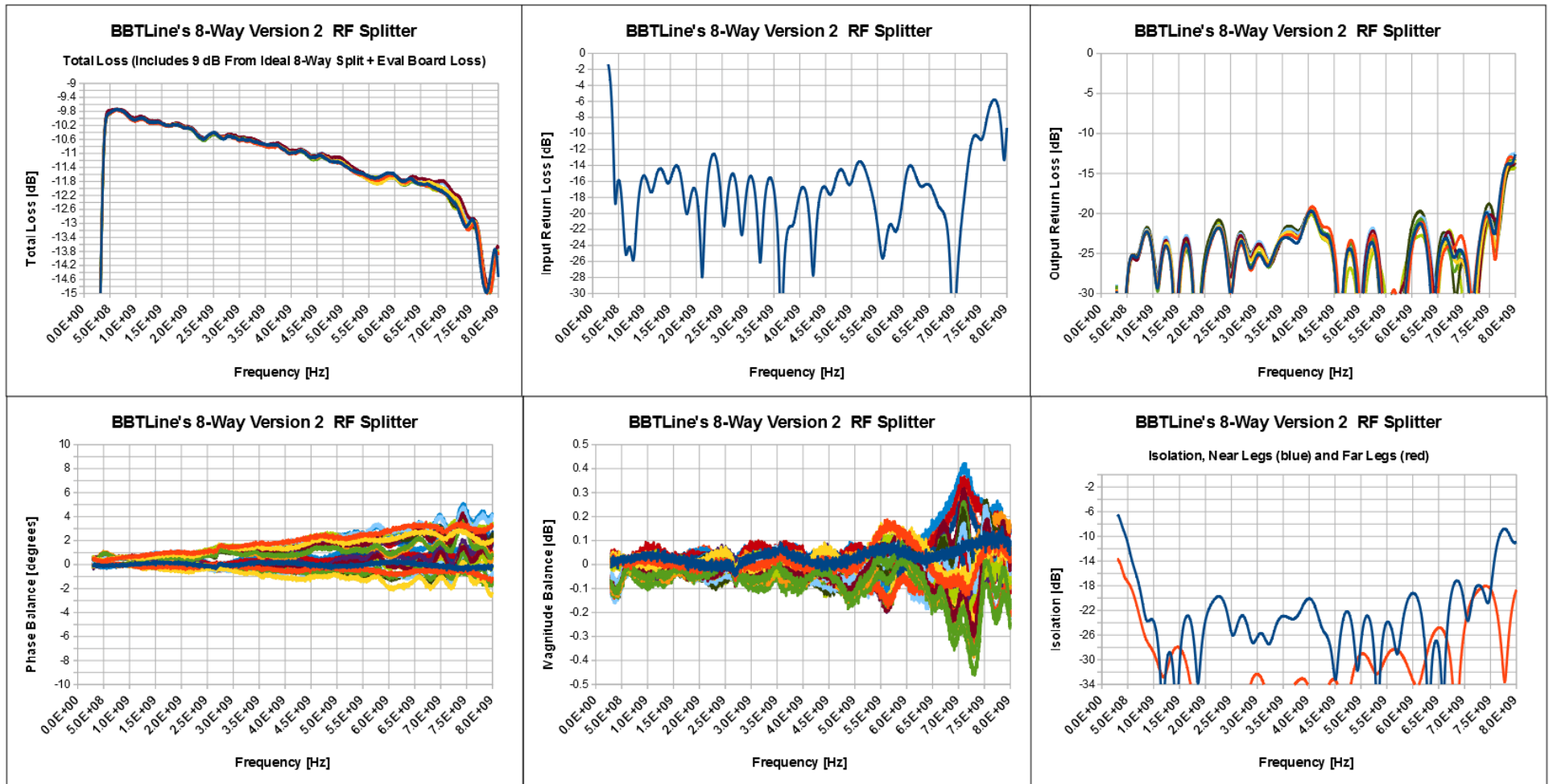
Total Loss Plot includes 9 dB from Ideal 8-Way Split plus Evaluation Board Loss (0.2 dB at 6 GHz). To derive **Insertion Loss** (at 6 GHz) from **Total Loss**, Add 9.2 dB. For example, if **Total Loss** reads -11.8 dB at 6 GHz, then **Insertion Loss** is 2.6 dB.



Total Loss Plot includes 9 dB from Ideal 8-Way Split plus Evaluation Board Loss (0.2 dB at 6 GHz). To derive **Insertion Loss** (at 6 GHz) from **Total Loss**, Add 9.2 dB. For example, if **Total Loss** reads -11.8 dB at 6 GHz, then **Insertion Loss** is 2.6 dB.



Total Loss Plot includes 9 dB from Ideal 8-Way Split plus Evaluation Board Loss (0.2 dB at 6 GHz). To derive **Insertion Loss** (at 6 GHz) from **Total Loss**, Add 9.2 dB. For example, if **Total Loss** reads -11.8 dB at 6 GHz, then **Insertion Loss** is 2.6 dB.



Total Loss Plot includes 9 dB from Ideal 8-Way Split plus Evaluation Board Loss (0.2 dB at 6 GHz). To derive **Insertion Loss** (at 6 GHz) from **Total Loss**, Add 9.2 dB. For example, if **Total Loss** reads -11.8 dB at 6 GHz, then **Insertion Loss** is 2.6 dB.

